

# Atos 2

## Gabriela Rocha

Arr.: Wagner R. S. Leal

♩ = 90

Gm7

E♭

B♭

Dm7

Gm7

E♭

B♭

8



Dm7

Gm7

E♭

B♭

Dm7

Gm7

E♭

B♭

Dm7

Gm7

16

*p*

E♭

B♭

D sus

D

Dm7

B♭

F

Am7

Dm7

B♭

*mf*

26



F

Am7

B♭

Dm7

F

B♭

C

B♭

Dm7

F

B♭

1.

36



C

2.

B♭

F/A

A♭

Gsus

G

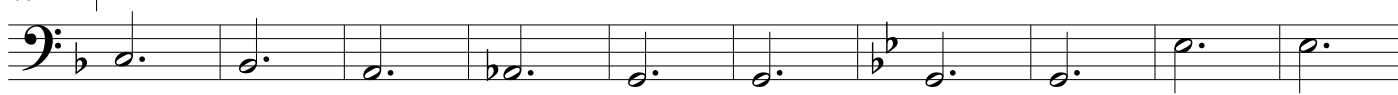
Gm7

Gm7

E♭

E♭

46

*mf*

B♭

E♭

Dm7

Dm7

Gm7

E♭

B♭

Dm7

Gm7

E♭

56



B♭

Dm7

E♭

Gm7

B♭

E♭

F

E♭

Gm7

66

*f*

B♭

E♭

F

E♭

Gm7

B♭

E♭

F

E♭

74



Gm7

B♭

E♭

F

E♭

E♭

Gm7

81



87

Gm7 Bb Eb F F Eb Eb Eb

94

Gm7 Gm7 Gm7 Bb Bb Eb F F F Eb Eb Eb Gm7

103

Gm7 Bb Eb F F Eb Gm7 Bb Eb F

*p*

112

Eb Gm7 Bb Eb F Eb Gm7 Bb Eb F

120

Bb Bb F Bb *rit.* F/A Gm7

Detailed description of the musical score: The score is written for electric bass in a key of Bb major (two flats). It spans measures 87 to 126. The notation is in bass clef. The first staff (measures 87-93) has a key signature change from two flats to one flat (Bb major) at measure 87. The second staff (measures 94-102) continues in Bb major. The third staff (measures 103-111) also continues in Bb major. The fourth staff (measures 112-119) includes a dynamic marking of 'p' (piano) at measure 112 and a 'rit.' (ritardando) marking at measure 115. The fifth staff (measures 120-126) concludes the piece with a final chord and a double bar line.